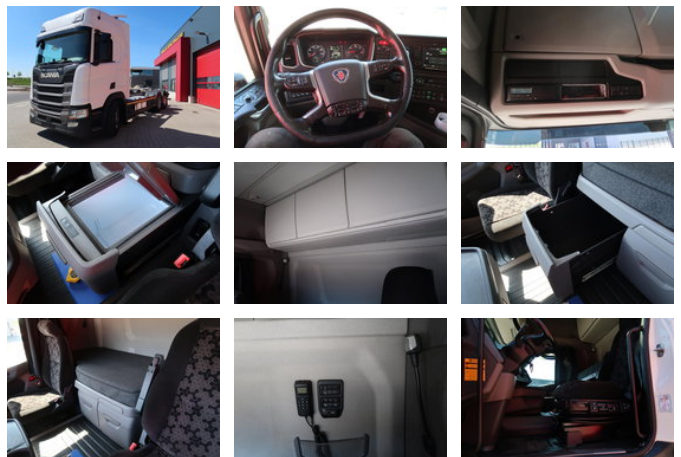


Scania R450 R450

Características gerais

Marca	Scania
model	R450
subCategory	Quadro com cabina
Quilometragem	531.611km
Ano de fabrico	2021
firstRegistrationDate	13-10-2021
Cor	Sagacidade
Condição	Usado
energyType	energyType.diesel
emissionsClass	Euro 6



Propriedades

cabin

Cabine dormitório

Scania R450 R450

Especificações técnicas

numberOfAxles	3
shortAxleConfiguration	6x2
transmissionType	transmissionType.automatic
power	450hp

accessories

- Trailer coupling
- Automatic
- Onboard Computer
- Climate control
- Electric windows
- steering axle 3e
- Lane Assist
- Air suspension system
- Parkassist
- Heated Mirrors
- Anti-lock braking system
- Air conditioning
- Aluminium fuel tank
- Central locking
- Cruise control
- Roof spoiler
- Electrically operated windows
- Low-noise
- Refrigerator
- Sleeper cab
- Speed limiter
- Vehicle heater
- Spotlights
- Side door
- Anti-lock braking system
- EBS
- Led lighting
- Retarder
- Spoilers
-
- Remote control
- Disc brakes
- Line detection
- Air suspension all around
- Lifthaxle