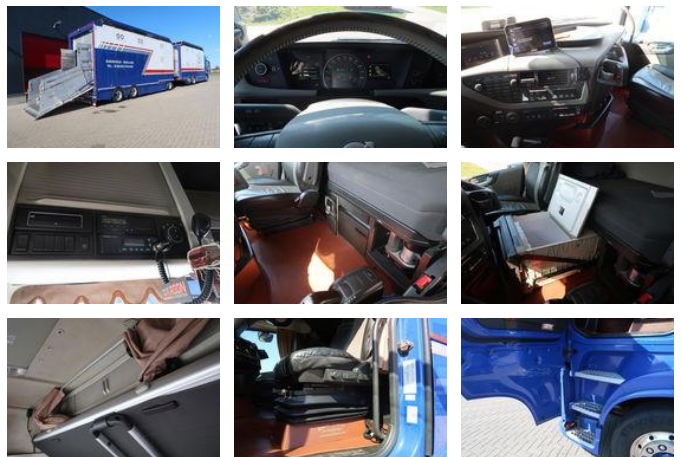


## Volvo FH FH 500 - Livestock transport

### Ogólne cechy

Marka	Volvo
model	FH
Podkategoria	Zwierzęta
licencePlate	48-BFH-3
Przebieg	999.999km
Rok budowy	2014
firstRegistrationDate	23-10-2014
Kolor	Niebieski
Stan	Używane
energyType	energyType.diesel
emissionsClass	Euro 6



### Właściwości

Masa własna	14.460kg
payloadWeight	12.540kg
GWV	27.000kg
length	971cm
width	255cm
cabin	Kabina sypialna
engineDisplacement	12.777cc

# Volvo FH FH 500 - Livestock transport

## Specyfikacje techniczne

numberOfAxles	3
shortAxleConfiguration	6x2
transmissionType	transmissionType.automatic
power	375kw

## Opis

2 layers loaded movable, inside height 2 x 1.70 with roof open. left and right fans remote control Nice complete car

## accessories

- 2 Floors
- Anti-lock braking system
- Acc
- Reversing camera
- Remote control
- Air conditioning
- Aluminium fuel tank
- Anti-lock braking system
- Hydraulic floors
- Central locking
- Central lubrication
- Cruise control
- Roof spoiler
- Drinking water installation
- Twin fuel tank
- EBS
- Electrically operated windows
- Electrically adjustable door mirrors
- isolated roof
- Toolbox
- lifting roof
- Refrigerator
- Alloy wheels
- Liftaxle
- Line detection
- Air horn
- Air suspension
- Fog lights
- Navigation system
- Radio/CD player
- Retarder

- Particulate filter
- Air suspension all around
- Storage space
- Disc brakes
- Sleeper cab
- Speed limiter
- Spoilers
- Stability control
- Vehicle heater
- 
- Coupling
- Fans
- Spotlights
- Feeding doors
- Xenon lighting
- 
- Visor