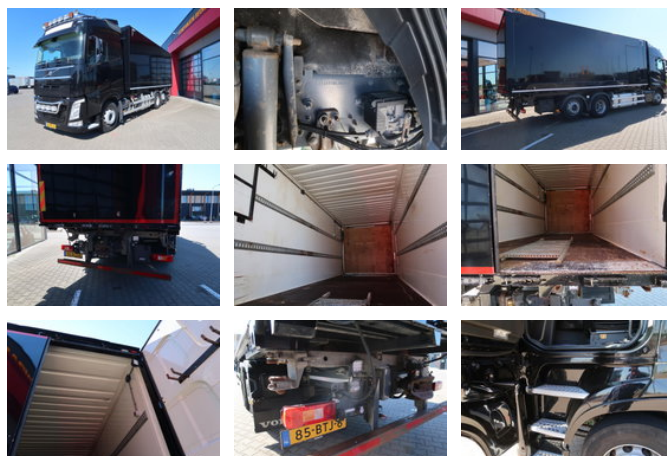


Volvo FH FH 460

Ogólne cechy

Marka	Volvo
model	FH
Podkategoria	Nadwozie wymienne
licencePlate	85-btj-6
Przebieg	550.048km
Rok budowy	2019
firstRegistrationDate	08-03-2019
Kolor	Czarny
Stan	Używane
energyType	energyType.diesel
emissionsClass	Euro 6



Właściwości

Masa własna	9.910kg
payloadWeight	17.090kg
GVW	27.000kg
length	963cm
width	255cm
cabin	Kabina sypialna
doorCount	2
engineDisplacement	12.777cc

Volvo FH FH 460

Specyfikacje techniczne

numberOfAxles	3
shortAxleConfiguration	6x2
transmissionType	transmissionType.automatic
power	345

accessories

- Trailer coupling
- Automatic
- Climate control
- steering axle 3e
- Lane Assist
- Air suspension system
- Power steering
- Rotating beacon
- Anti-lock braking system
- Reversing camera
- Air conditioning
- Aluminium fuel tank
- Central locking
- Cruise control
- Roof spoiler
- Twin fuel tank
- Electrically operated windows
- Toolbox
- Refrigerator
- Air horn
- Radio/CD player
- Sleeper cab
- Speed limiter
- Stability control
- Coupling
- Heavy duty engine brake
- Spotlights
- Visor
- Anti-lock braking system
- EBS
- Electrically adjustable door mirrors
- Led lighting
- Spoilers
-
- Disc brakes
- Air suspension all around

- Liftaxle