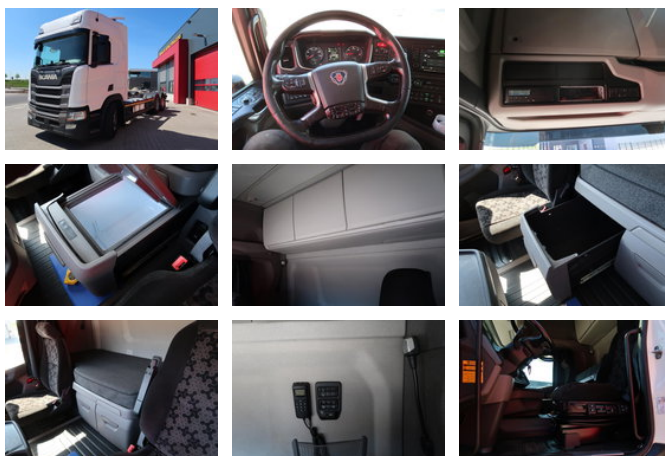


Scania R450 R450

Ogólne cechy

Marka	Scania
model	R450
Podkategoria	Podwozie z kabiną
Przebieg	531.611km
Rok budowy	2021
firstRegistrationDate	13-10-2021
Kolor	Dowcip
Stan	Używane
energyType	energyType.diesel
emissionsClass	Euro 6



Właściwości

cabin

Kabina sypialna

Scania R450 R450

Specyfikacje techniczne

numberOfAxles	3
shortAxleConfiguration	6x2
transmissionType	transmissionType.automatic
power	450hp

accessories

- Trailer coupling
- Automatic
- Onboard Computer
- Climate control
- Electric windows
- steering axle 3e
- Lane Assist
- Air suspension system
- Parkassist
- Heated Mirrors
- Anti-lock braking system
- Air conditioning
- Aluminium fuel tank
- Central locking
- Cruise control
- Roof spoiler
- Electrically operated windows
- Low-noise
- Refrigerator
- Sleeper cab
- Speed limiter
- Vehicle heater
- Spotlights
- Side door
- Anti-lock braking system
- EBS
- Led lighting
- Retarder
- Spoilers
-
- Remote control
- Disc brakes
- Line detection
- Air suspension all around
- Lifthaxle