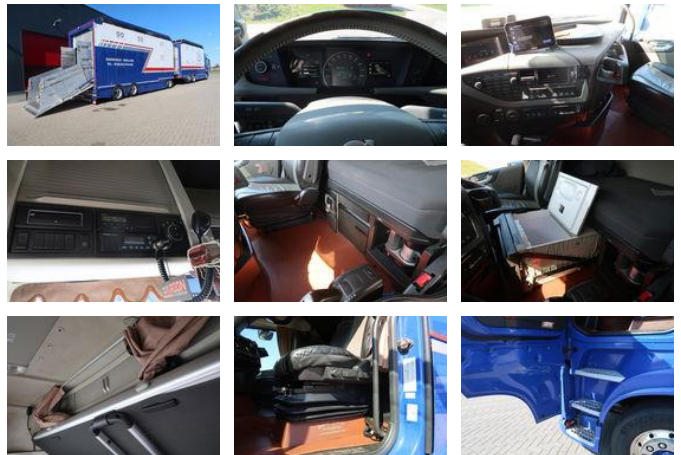


Volvo FH FH 500 - Livestock transport

General features

Brand	Volvo
Model	FH
Subcategory	Livestock
Licence plate	48-BFH-3
Odometer reading	999.999km
Construction year	2014
Date of first registration	23-10-2014
Color	Blue
Condition	Used
Fuel	Diesel
Emission class	Euro 6



Characteristics

Empty weight	14.460kg
Load capacity	12.540kg
GWV	27.000kg
Length	971cm
Width	255cm
Cabin	Sleeper cabin
Cylinder contents	12.777cc

Volvo FH FH 500 - Livestock transport

Technical specifications

Number of axes	3
Axis configuration	6x2
Transmission	Automatic
Engine output	375kw

Description

2 layers loaded movable, inside height 2 x 1.70 with roof open. left and right fans remote control Nice complete car

Accessories

- 2 Floors
- Anti-lock braking system
- Acc
- Reversing camera
- Remote control
- Air conditioning
- Aluminium fuel tank
- Anti-lock braking system
- Hydraulic floors
- Central locking
- Central lubrication
- Cruise control
- Roof spoiler
- Drinking water installation
- Twin fuel tank
- EBS
- Electrically operated windows
- Electrically adjustable door mirrors
- isolated roof
- Toolbox
- lifting roof
- Refrigerator
- Alloy wheels
- Liftaxle
- Line detection
- Air horn
- Air suspension
- Fog lights
- Navigation system
- Radio/CD player
- Retarder

- Particulate filter
- Air suspension all around
- Storage space
- Disc brakes
- Sleeper cab
- Speed limiter
- Spoilers
- Stability control
- Vehicle heater
-
- Coupling
- Fans
- Spotlights
- Feeding doors
- Xenon lighting
-
- Visor