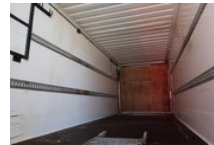


Volvo FH FH 460

General features

Brand	Volvo
Model	FH
Subcategory	Swap body
Licence plate	85-btj-6
Odometer reading	550.048km
Construction year	2019
Date of first registration	08-03-2019
Color	Black
Condition	Used
Fuel	Diesel
Emission class	Euro 6



Characteristics

Empty weight	9.910kg
Load capacity	17.090kg
GVW	27.000kg
Length	963cm
Width	255cm
Cabin	Sleeper cabin
Door count	2
Cylinder contents	12.777cc

Volvo FH FH 460

Technical specifications

Number of axes	3
Axis configuration	6x2
Transmission	Automatic
Engine output	345

Accessories

- Trailer coupling
- Automatic
- Climate control
- steering axle 3e
- Lane Assist
- Air suspension system
- Power steering
- Rotating beacon
- Anti-lock braking system
- Reversing camera
- Air conditioning
- Aluminium fuel tank
- Central locking
- Cruise control
- Roof spoiler
- Twin fuel tank
- Electrically operated windows
- Toolbox
- Refrigerator
- Air horn
- Radio/CD player
- Sleeper cab
- Speed limiter
- Stability control
- Coupling
- Heavy duty engine brake
- Spotlights
- Visor
- Anti-lock braking system
- EBS
- Electrically adjustable door mirrors
- Led lighting
- Spoilers
-
- Disc brakes
- Air suspension all around

- Liftaxle