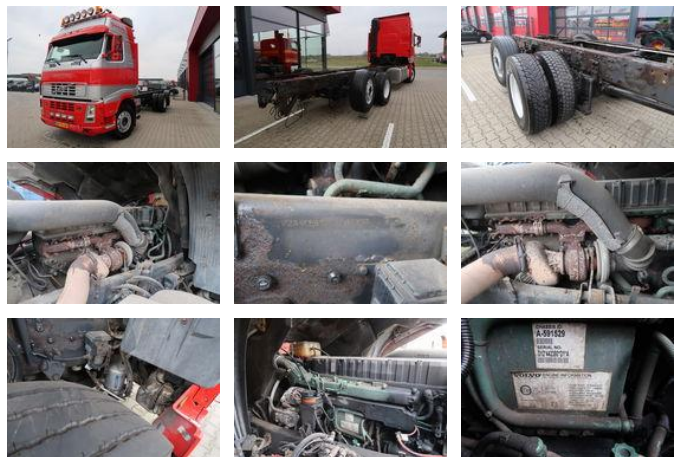


Volvo FH 12.460 FH 12-460 Chassis Cabine

General features

| | |
|----------------------------|-------------|
| Brand | Volvo |
| Model | FH 12.460 |
| Subcategory | Chassis cab |
| Licence plate | BP-TG-34 |
| Odometer reading | 999.999km |
| Construction year | 2004 |
| Date of first registration | 23-11-2004 |
| Condition | Used |
| Fuel | Diesel |
| Emission class | Euro 3 |



Characteristics

| | |
|---------------|---------------|
| Empty weight | 14.310kg |
| Load capacity | 12.690kg |
| GWV | 27.000kg |
| Length | 959cm |
| Width | 255cm |
| Cabin | Sleeper cabin |

Volvo FH 12.460 FH 12-460 Chassis Cabine

Technical specifications

| | |
|--------------------|-----------|
| Number of axes | 3 |
| Axis configuration | 6x2 |
| Transmission | Automatic |
| Engine output | 460hp |

Accessories

- Anti-lock braking system
- Air conditioning
- Aluminium fuel tank
- Cruise control
- Roof spoiler
- Air horn
- Sleeper cab
- Vehicle heater
- Heavy duty engine brake
- Visor
- Electrically adjustable door mirrors
- Spoilers
-
- Disc brakes
- Air suspension
-
- Liftaxle