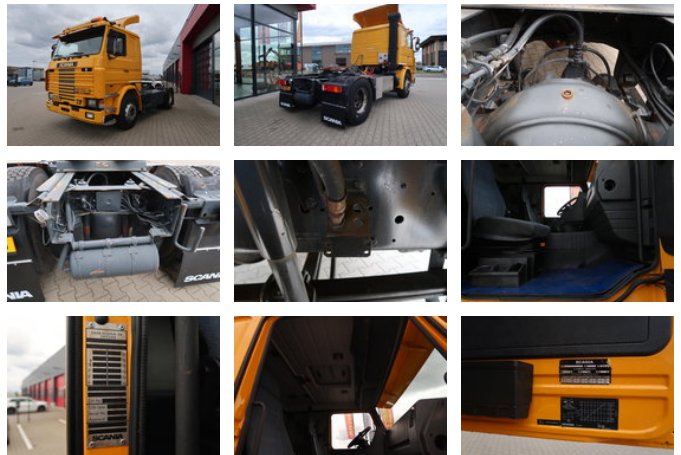


Scania R 143 MA 4X2 143 M

General features

Brand	Scania
Subcategory	Cab over engine
Licence plate	BD-356-J
Odometer reading	106.416km
Construction year	1990
Date of first registration	01-01-1990
Color	Yellow
Condition	Used
Fuel	Diesel
Emission class	Euro 0



Characteristics

Empty weight	7.254kg
Load capacity	10.746kg
GVW	18.000kg
Length	580cm
Width	246cm
Cabin	Sleeper cabin
Cylinder contents	14.190cc

Scania R 143 MA 4X2 143 M

Technical specifications

Number of axes	2
Axis configuration	4x2
Transmission	Manual
Engine output	294

Accessories

- Electric windows
- Air Suspension Seats
- Rotating beacon
- Anti-lock braking system
- Air conditioning
- PTO
- Sleeper cab
- Vehicle heater
- Visor
- Drumbrakes